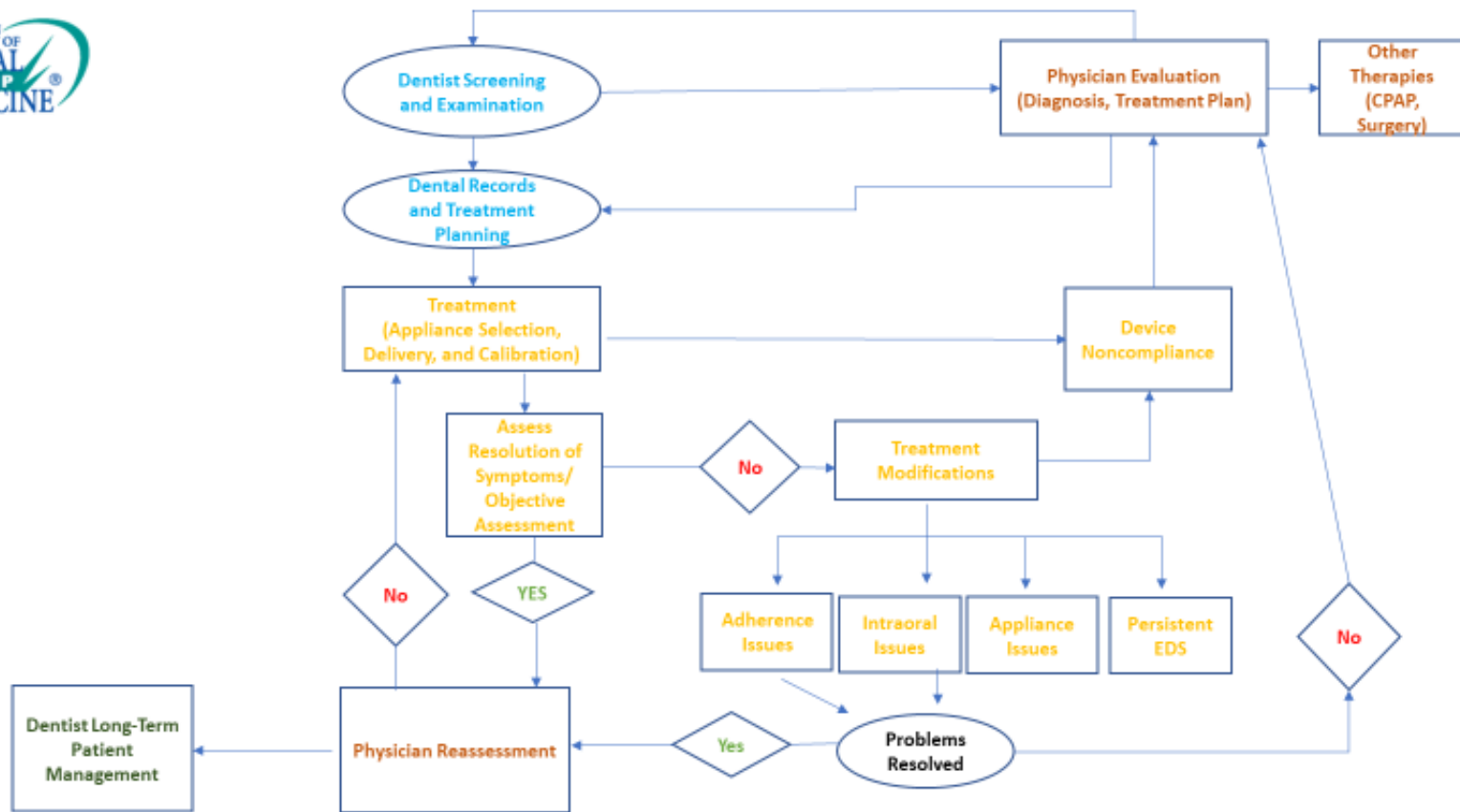


Figure 1. Clinical Pathway for the Management and Treatment of SRBD



CPAP = Continuous Positive Airway Pressure; EDS = Excessive Daytime Sleepiness

Levine M, Bennett K, Cantwell M, Postol K, Schwartz, D. Dental sleep medicine standards for screening, treating and managing adult patients with sleep-related breathing disorders. *J Dent Sleep Med.* 2018;5(3):61-68